

Patrice

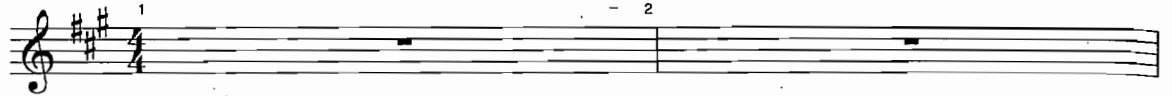
# WHAT IT MEANS TO BE A FRIEND

6

ARCHIE: Come on. Give him another chance.

PATRICE: Another chance? No, sorry.

PATRICE: Friend? He doesn't know the meaning of the word. I've given "another chance" to every other jerk in this town...



...I thought there was something special about him. "Friend." Please.

PATRICE:




5




#6 - What It Means To Be A Friend

6



learn - ing a friend — is - n't real. — A

er jerk in this town.



friend sends notes back and forth all day — and does - n't

PATRICE:




A



care that you — can't spell. — A



Or a



friend knows you've got a crush — on your teach - er but a



all — Cares —



friend would ne - ver tell. — A friend's out - side wait - ing The



er than



min - ute you both — hear the bell... — And if your heart

#6 - What It Means To Be A Friend

19 20  
is al - ways break - ing 'Cause the world

21 22  
is just not fair, When you're at

19 23 24 25  
your worst, Your friend's the first one there, Giv -

26 27  
ing you some - thing to lean on - And that's

28 29 30  
what it means to be a friend.

ARCHIE: You've got him all wrong, Patrice. You'll see. *(He exits.)*

31 32 33

A

#6 - What It Means To Be A Friend

the world

34

friend won't smoke when she's in your room— Or

you're at

35

laugh at the po - ems you write. A

Giv -

36

friend won't go and start kiss - ing your bro - ther the

And that's

37

min-ute that you're— out of sight.— A friend is the per - son You

call six - teen times— ev' - ry night!—

39

And if your heart

A

41

is al - ways break - ing, — And you want — to run — and hide,

#6 - What It Means To Be A Friend



When your hope — is gone, — Your friend — is on — your side. —



— If some — one moves in — 'round the cor — ner And you —



— want to show — him you care, So you —



— give him all — your last month — of va - ca - tion and all



of the time — you can spare, — And then, —



— on the first — day of class - es, He acts —

#6 - What It Means To Be A Friend



n— your side...



er And you...



So you...



- tion and all



And then,—



He acts—



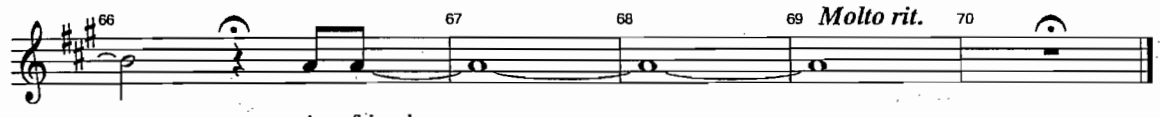
— like you're not— e - ven there, — Then he



does - n't know... He — does - n't know! —



He'll nev - er know — what it means — to be —



A friend.

*Applause Segue to*  
**#7. ALL HAIL THE BRAIN**

**#6 — What It Means To Be A Friend**

Patrice

# THE LAMEST PLACE IN THE WORLD

2

EVAN: So I need this one to be the best! The best DJ  
in the best ballroom at the best hotel...

PATRICE: ... which is the Best Western.

EVAN: Come on. There's got to be someplace in this town.



PATRICE: Sorry, but your choices are like my life here; limited.

EVAN: Limited to what?

PATRICE: Um, okay.



Down the road, — there's a Dair - y Queen. — Up the block, — there's a



Wal - Mart. — There's a place you can — ac - ces - so - rize — your pets. —



A school, — a tree, — a

2

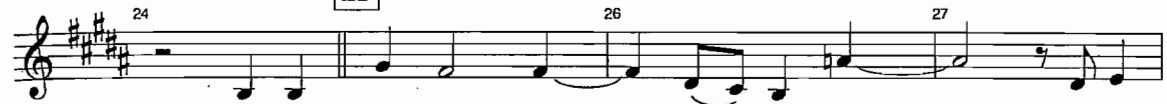


cou-ple of church - es, And no mat-ter how hard an-y - bo-dy search - es,



That's a - bout — as thrill - ing as — this dumb - ass vil - lage gets.

25



It's the lam - est place — in — the world, — But it



just got a lit - tle bit bet - ter, So don't —



— dis - ap - pear. — It's the lam - est place —



— in — the world. — But I'm pret - ty sure — It's

#2 - The Lamest Place In The World

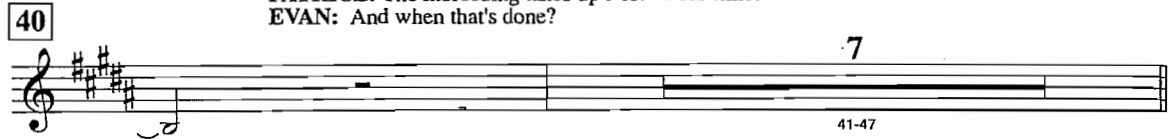
37 38 39



not as lame— as it was— be - fore— Now that you're here.


EVAN: Patrice, that can't be everything. There's gotta be more to do around here?  
 PATRICE: The inbreeding takes up a lot of our time.  
 EVAN: And when that's done?

40



41-47

48



49 50

For - ty miles— to the near - est riv - er, Six - ty miles— to the




51 52

air - port, When we plan— our es - cape,— that's where—



53 54 55

— we're gon - na have— to be.— It's a



56 57 58

shame, it's a sham, it's a ter - ri - ble pit - y You got— dragged a - way from New—

#2 - The Lamest Place In The World

you're here.

here?

s to the

at's where—

It's a

ay from New

59 60 61

— York Ci - ty, It's ma - jor suck — for you, — but it's a -

62 63 64

maz - ing luck — for me! — It's the lam - est place —

65 66 67 68

— in — the world, — But it just got a lit - tle bit bet - ter,

69 70 71 72

I'm hap - py to say: — It's the lam - est place —

73 74 75

— in — the world, — And you're com -

76 77 78 79 80

- plete - ly — ex - ot - ic, — In - tel - lec - tu - al, —

#2 — *The Lamest Place In The World*